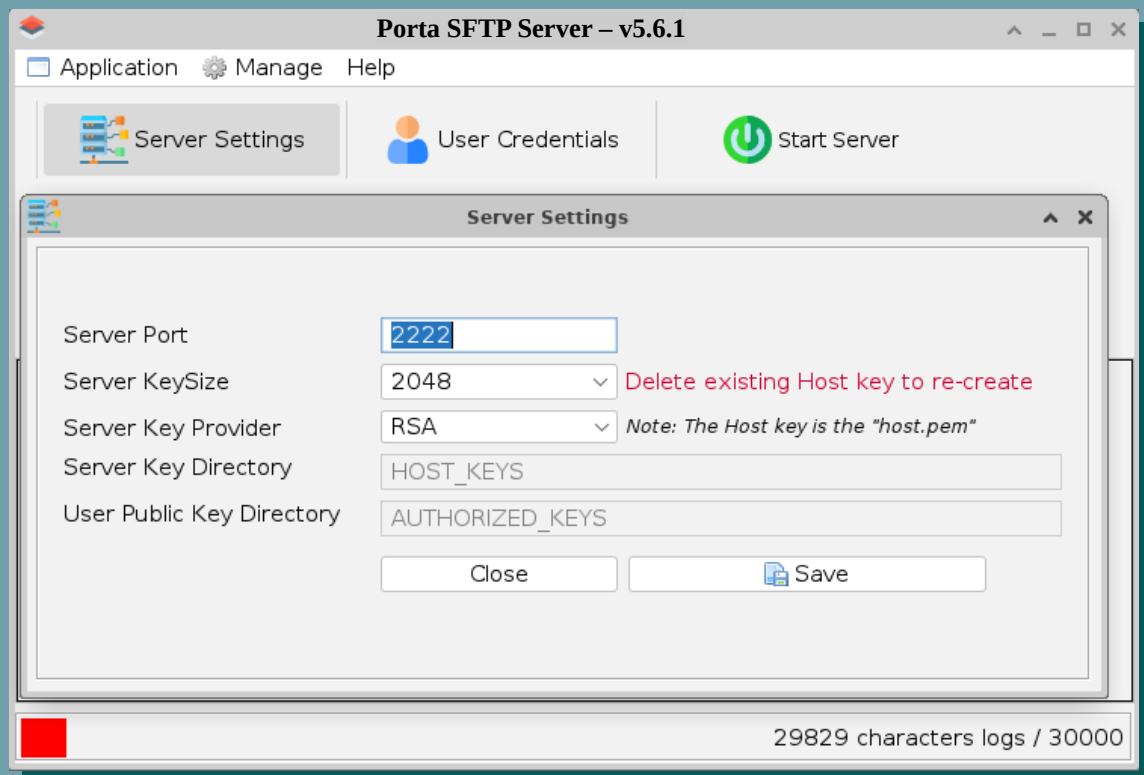


Table of Contents

Extracting Protected Zip File.....	3
Allow Program As Executable File Type.....	4
Allow Portable JVM to Make “sudo” Calls.....	4
Starting / Running Porta SFTP Server.....	5
Encryption Settings.....	5
Private Key Password Protection Settings.....	6
Setting-Up User W/ Custom Directory Path.....	7
IP Address Filtering.....	8
Logging.....	9

Secure Virtual Private Server (VPS) / VM – File Transfer with Porta SFTP Server

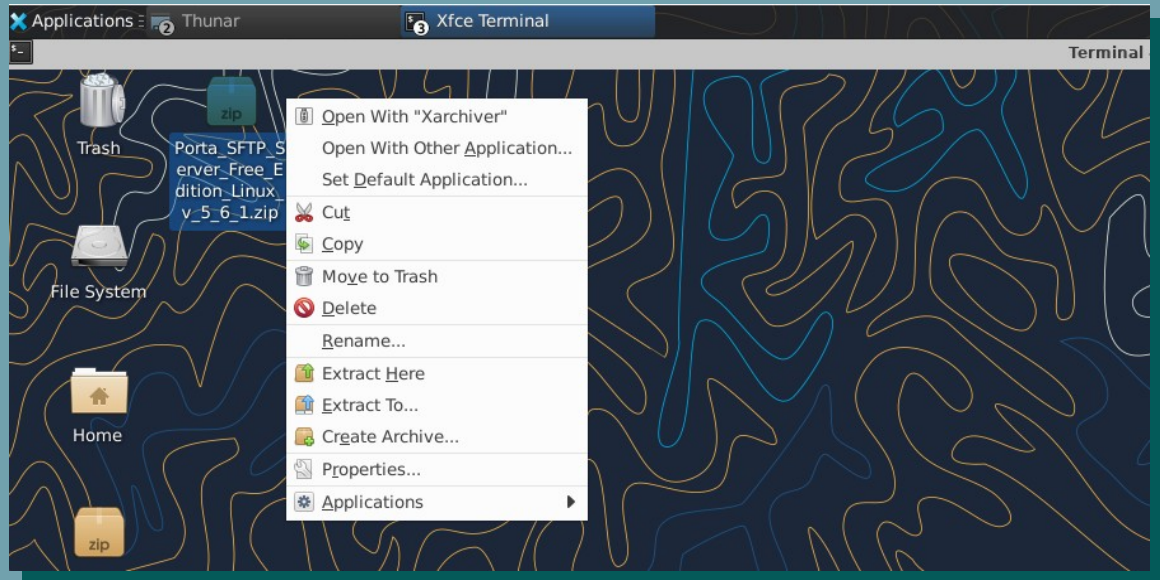
Use Case / Implementation For Linux Ubuntu 24.04



Date Published: 04/13/2026

Extracting Protected Zip File

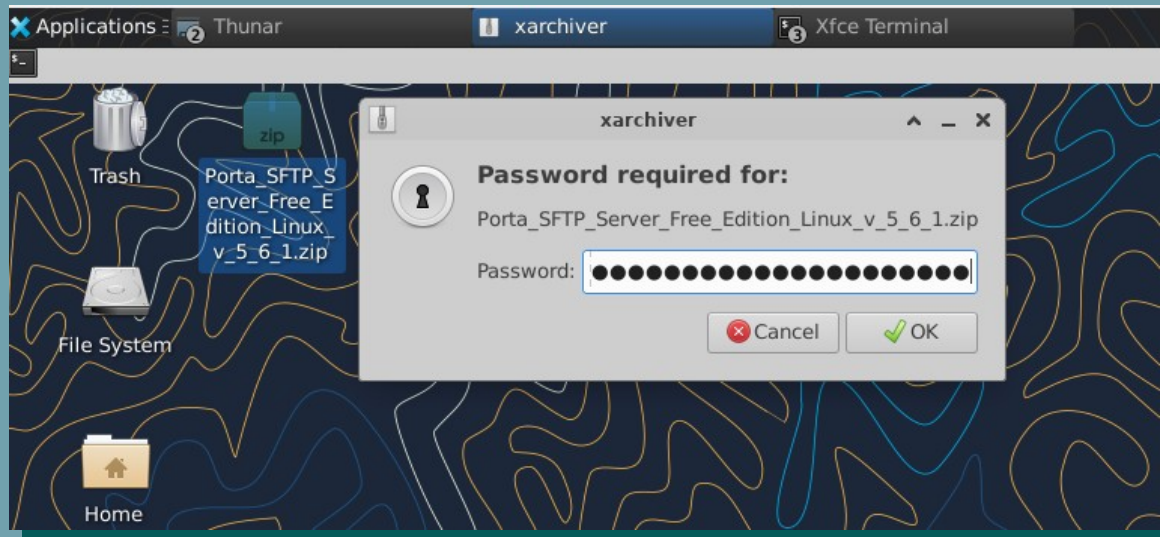
Figure 1



Note. Select the “Extract Here” to extract the zip file with its current name.

Once you have selected the desired extraction process, enter the password.

Figure 2

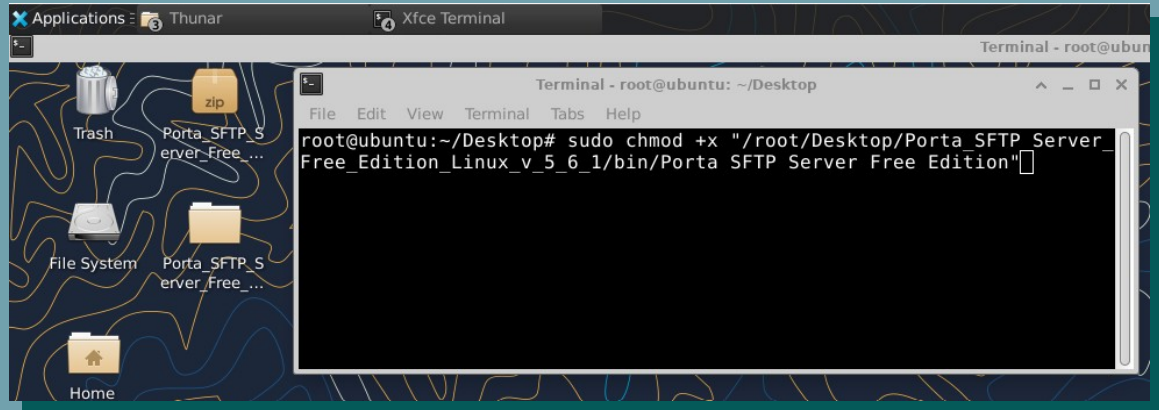


Note. Porta SFTP Server is packaged/zipped with 7-Zip.

Allow Program As Executable File Type

Warning: Create a separate user for the Porta SFTP Server if you plan to use it long-term for personal or non-commercial purposes. The “root” account was used only for convenience in this demonstration.

Figure 3



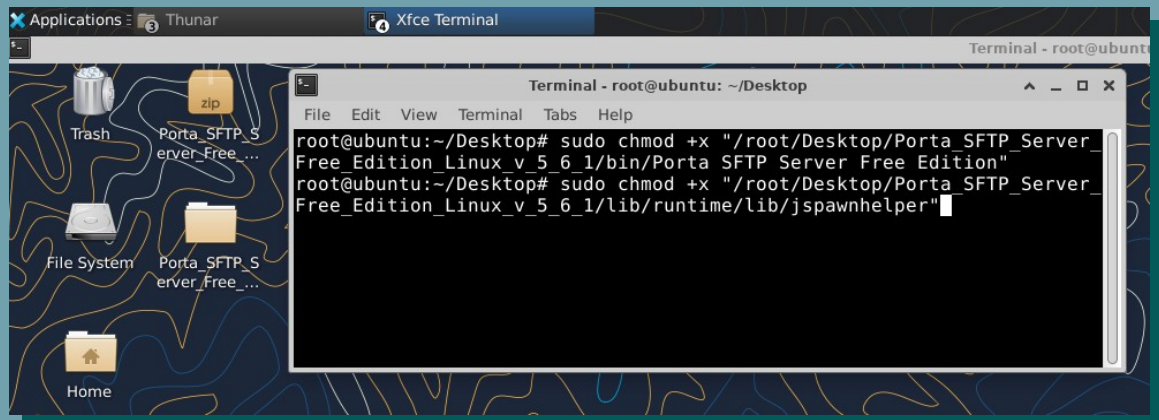
Execute the following within Linux/Ubuntu Terminal under ~/Desktop:

```
sudo chmod +x "/root/Desktop/Porta_SFTP_Server_Free_Edition_Linux_v_5_6_1/bin/Porta_SFTP_Server_Free_Edition"
```

Allow Portable JVM to Make “sudo” Calls

Additional requirements for fully delegating Fail2Ban (If you wanted to use it), this is to allow the Portable JVM to make a sudo call e.g “/bin/fail2ban-client”.

Figure 4



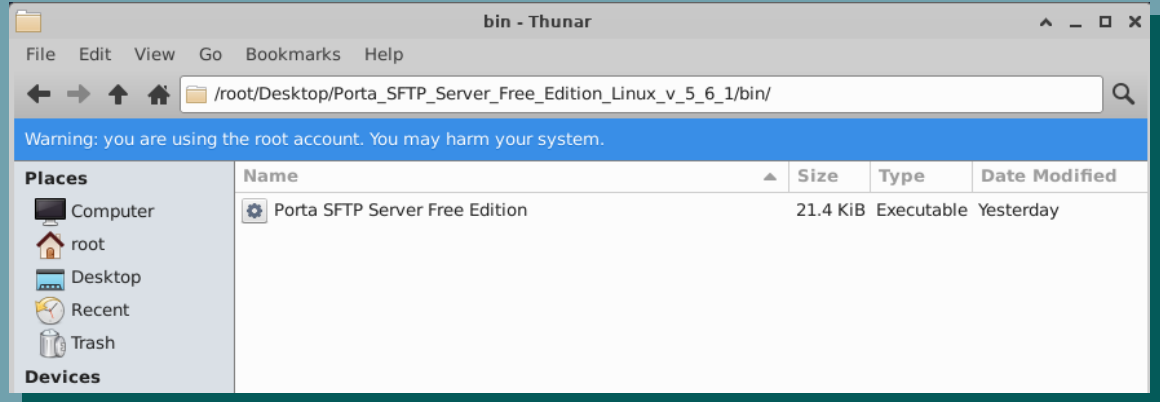
Execute the following:

```
sudo chmod +x "/root/Desktop/Porta_SFTP_Server_Free_Edition_Linux_v_5_6_1/lib/runtime/lib/jspawnhelper"
```

Starting / Running Porta SFTP Server

Navigate the Porta SFTP Server directory and go to bin folder.

Figure 5



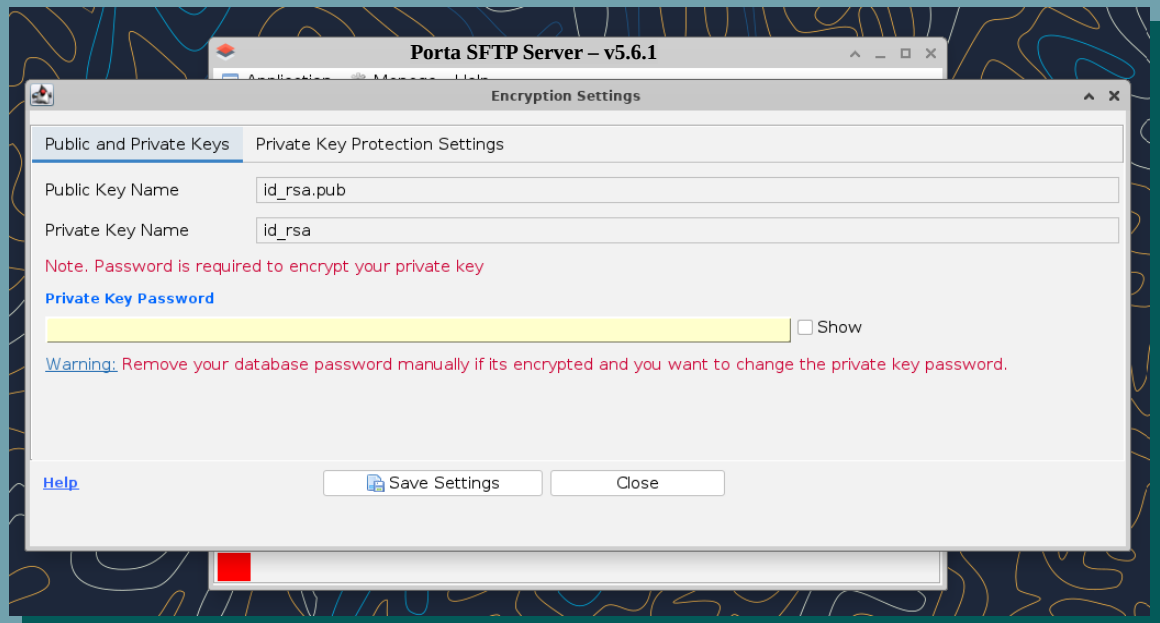
Note. As you can see, the file type is Executable.

Encryption Settings

Double click the above executable file and you should see the following:

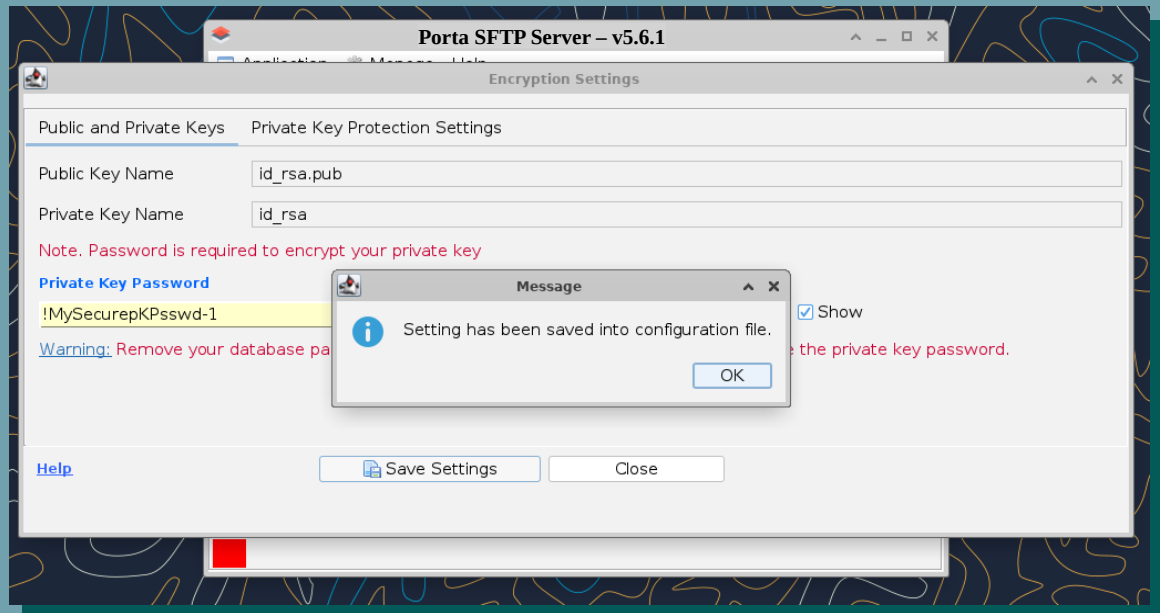
Figure 6

In the **Public and Private Keys** tab, you will see the field for the private key password. Please specify the password to protect the private key.



Note. Private key password must be between 8-18 alpha-numeric characters. See Figure 7.

Figure 7

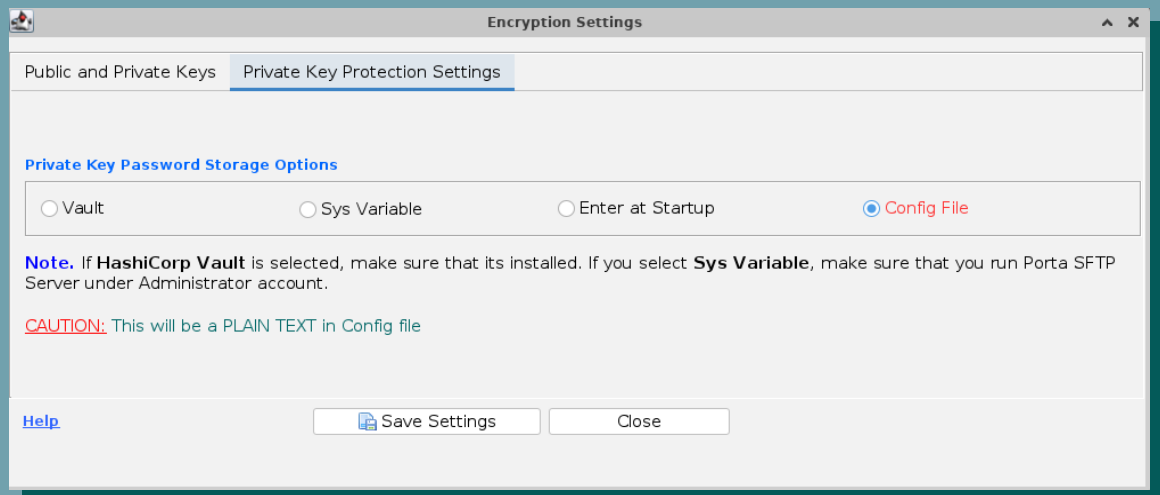


Note. Please take note of the password and save it somewhere safe.

Private Key Password Protection Settings

For advanced configuration of the private key security, you can make adjustments from the **Private Key Protection Settings** tab. By default, it uses the Config File option to store the RSA/Private key password.

Figure 8



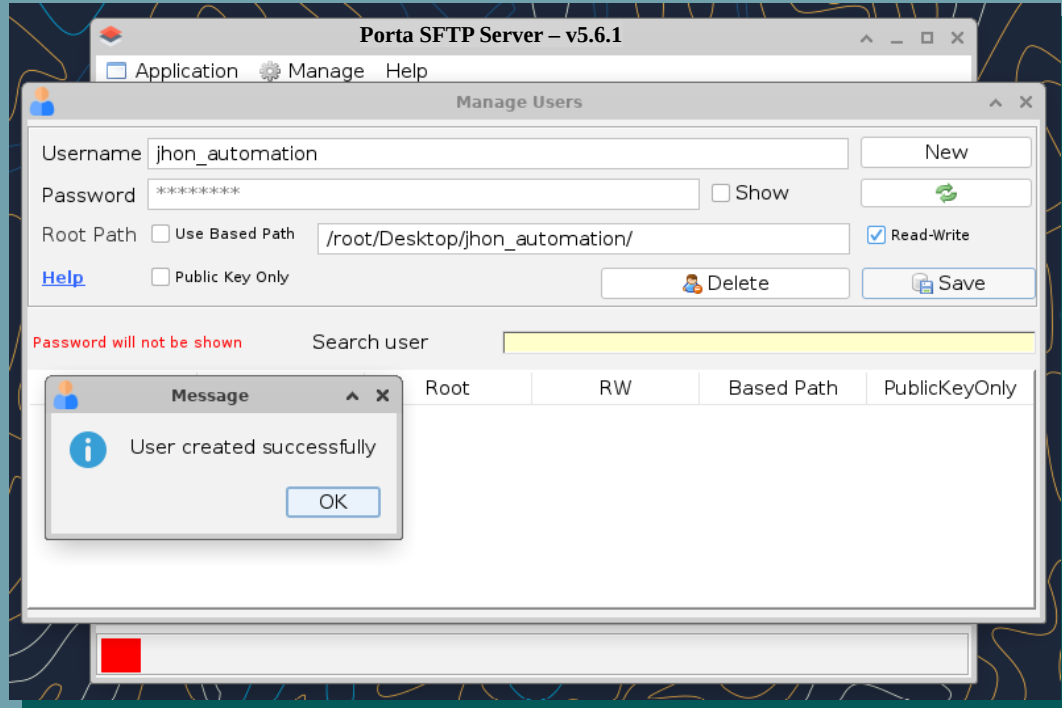
- **Vault** – if you want to use HashiCorp Vault.
- **Sys Variable** – if you want to use the OS System Environment Variables
- **Enter at Startup** – if you want to provide the RSA Password at startup

Setting-Up User W/ Custom Directory Path

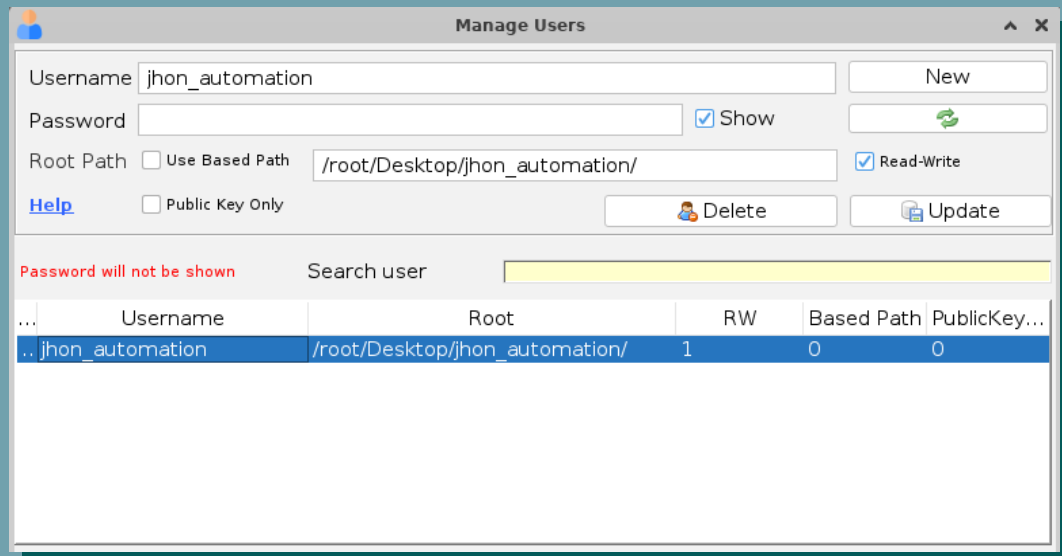
By default, Porta SFTP Server uses based path e.g [app_path/lib/app/], unless you specify the full customized path and uncheck the “Use Based Path” checkbox.

The virtual account from the following figure is for the user **jhon_automation** with the custom path to **/root/Desktop/jhon_automation/**. Please take note that if you decides to use a custom path, you have to create the folder manually.

Figure 9



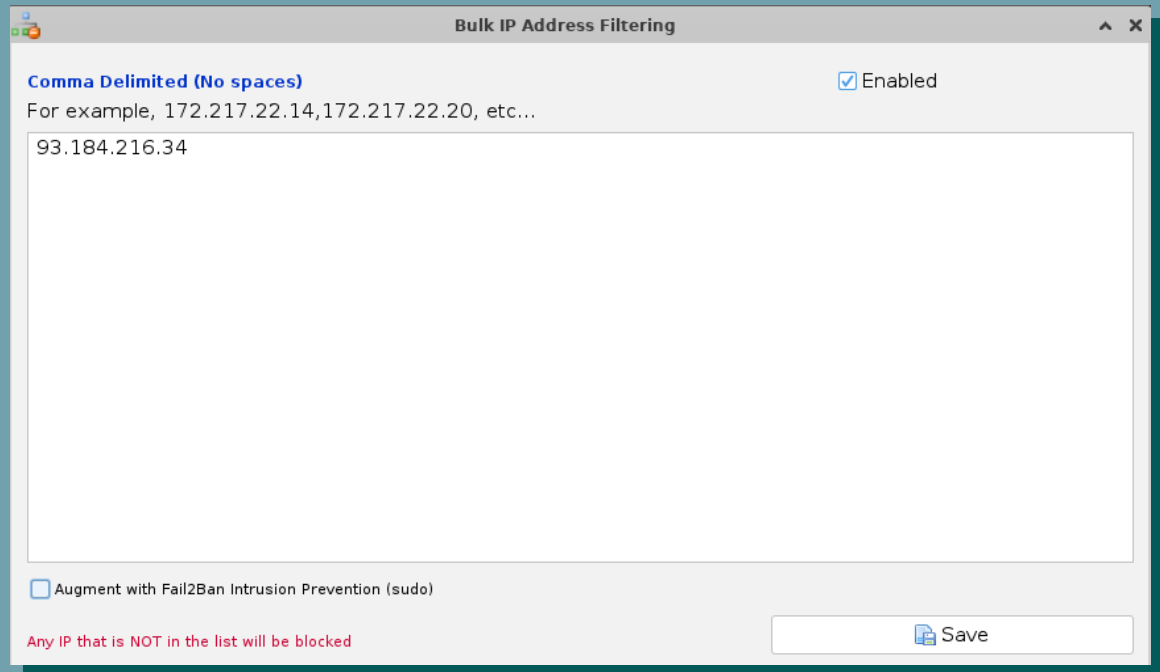
Note. Make sure to mark the **Read-Write** if intended for the user.



IP Address Filtering

To strengthen the security posture of the Porta SFTP Server, make sure to allow only the expected IP address, e.g., your public IP.

Figure 10



Please beware that, to augment with Fail2Ban to guard the port 2222, you must follow these steps here: <https://portasftpserver.com/how-to-use-fail2ban-with-porta-sftp-server/>

And that is all, if you encountered issues for starting the server, make sure that the port you selected is enabled, e.g., using the `sudo ufw allow 2222/tcp`. Also allow from your hosting provider such as from your VPS/VM.

Logging

Porta SFTP Server comes with a comprehensive logging capability, you can see the real time logging on the UI and also from Log folder such as:

```
/root/Desktop/Porta_SFTP_Server_Free_Edition_Linux_v_5_6_1/lib/app/logs/
```

Figure 11

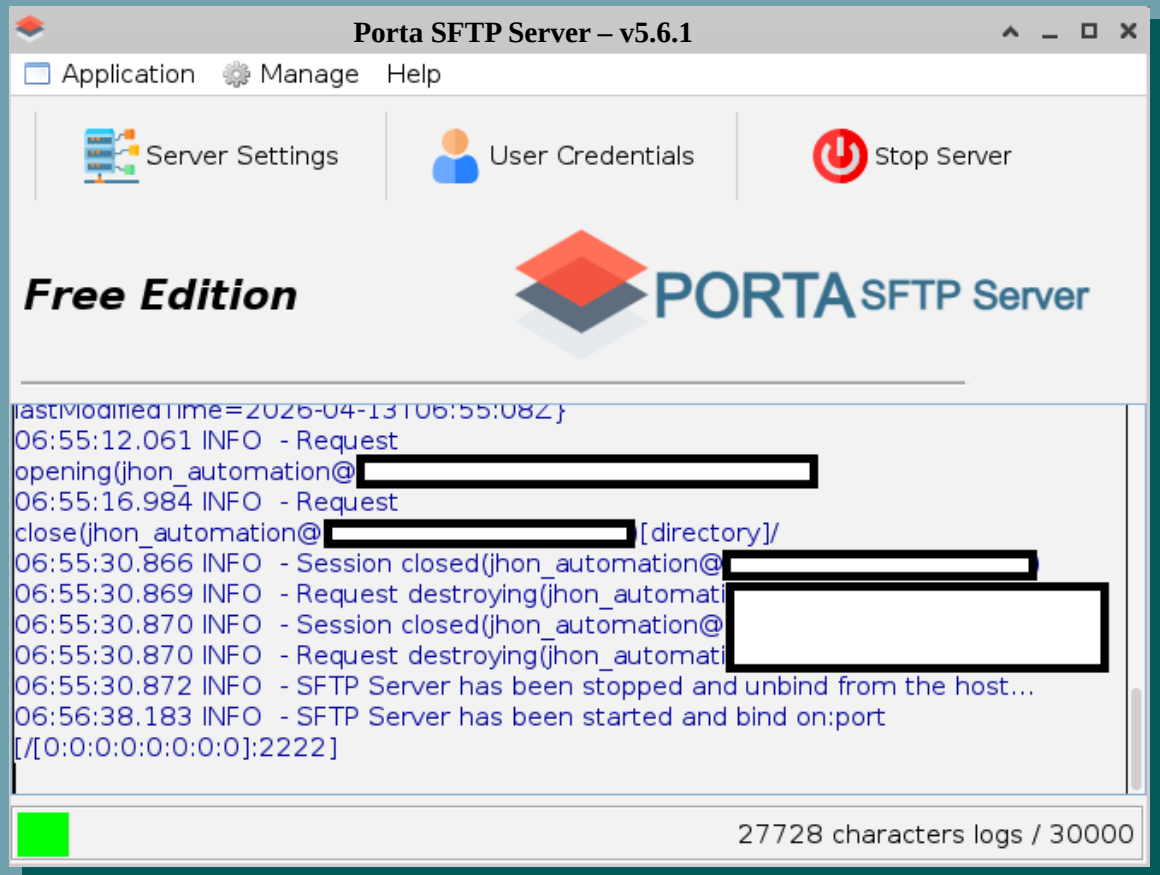
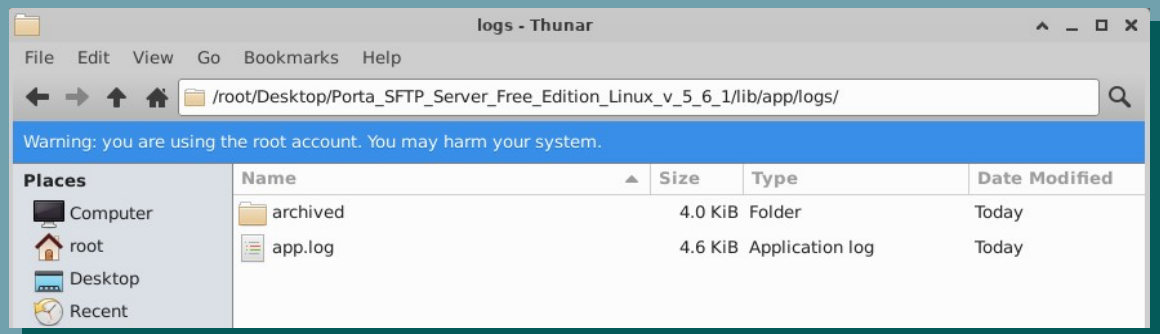


Figure 12



Thank you

Please share to keep this
project going.

Or

Write us a review at:

[https://share.google/
Gv3puksat9xhlX0cg](https://share.google/Gv3puksat9xhlX0cg)